

DATECH

DISTRIBUTEURS

SÉRIE

P

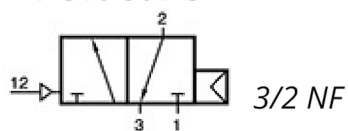
# DISTRIBUTEURS

# P

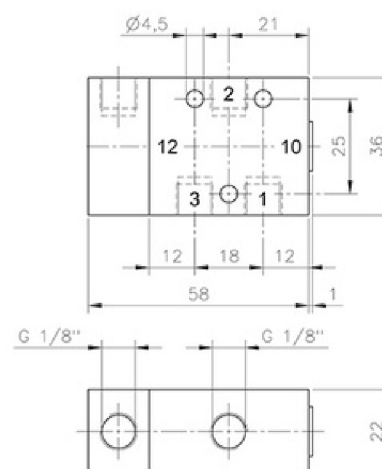
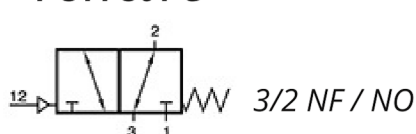


**G 1/8"**

**P 310 501 G**

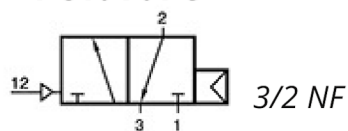


**P 311 501 G**

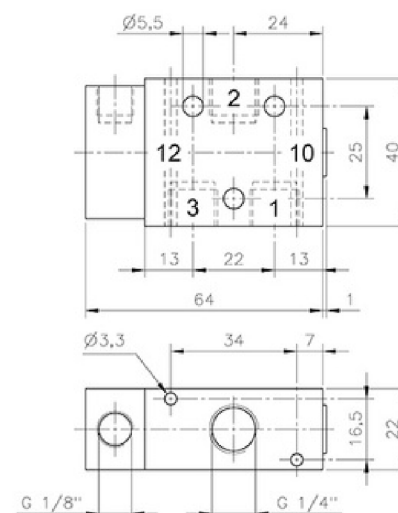
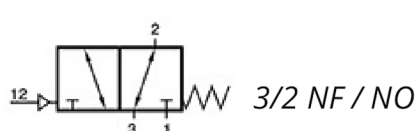


**G 1/4"**

**P 310 701 G**



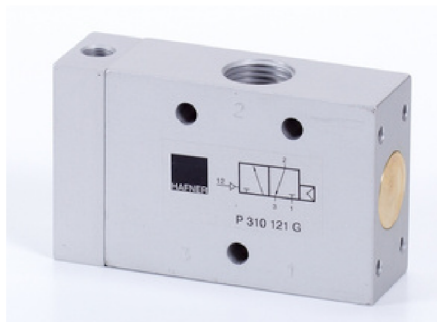
**P 311 701 G**



Référence	Orifice	Débit	Pression de service	Pression d'actionnement	Poids
P 310 501 G	G 1/8"	650 l/min	2 - 10 bars	2 - 10 bars	0,13 kg
P 310 701 G	G 1/4"	1250 l/min	2 - 10 bars	2 - 10 bars	0,14 kg
P 311 501 G	G 1/8"	1250 l/min	1 - 10 bars	3 - 10 bars	0,13 kg
P 311 701 G	G 1/4"	1250 l/min	1 - 10 bars	3 - 10 bars	0,14 kg

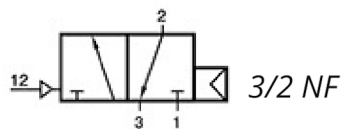
# DISTRIBUTEURS

# P

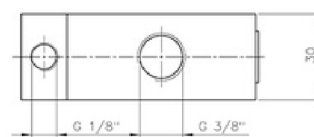
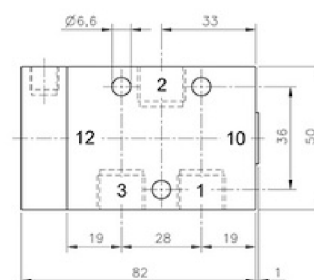
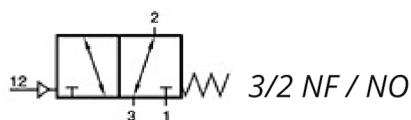


**G 3/8"**

**P 310 101**

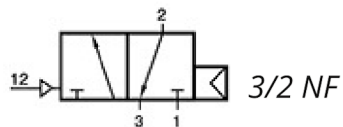


**P 311 101**

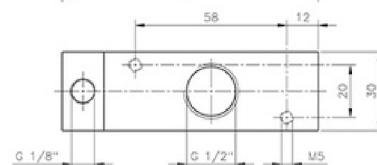
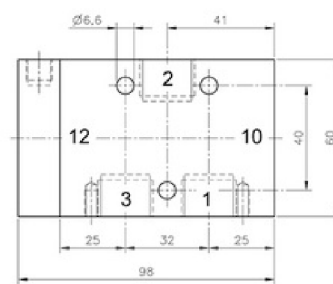
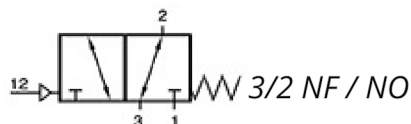


**G 1/2"**

**P 310 121 G**



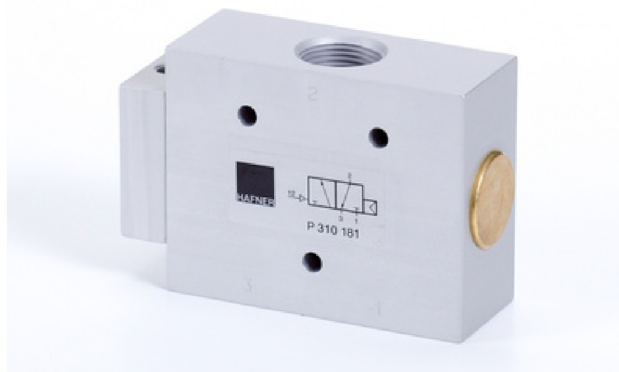
**P 311 121 G**



Référence	Orifice	Débit	Pression de service	Pression d'actionnement	Poids
P 310 101	G 3/8"	2250 l/min	1,5 - 10 bars	1,5 - 10 bars	0,32 kg
P 310 121 G	G 1/2"	3000 l/min	1 - 10 bars	1 - 10 bars	0,45 kg
P 311 101	G 3/8"	2250 l/min	1 - 10 bars	3 - 10 bars	0,32 kg
P 311 121 G	G 1/2"	3000 l/min	1 - 10 bars	3 - 10 bars	0,45 kg

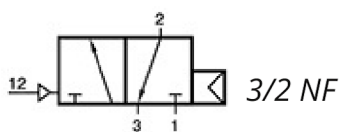
# DISTRIBUTEURS

# P

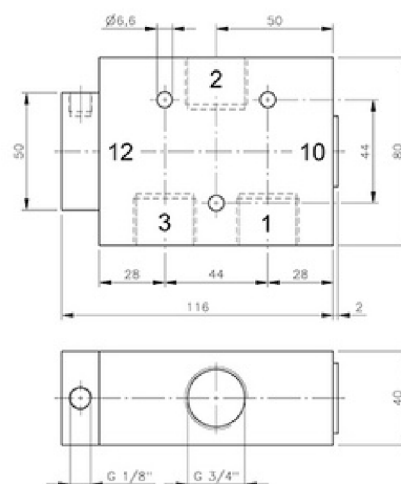
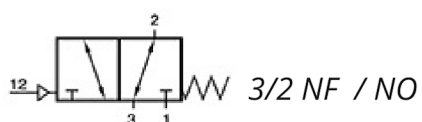


**G 3/4"**

**P 310 181**



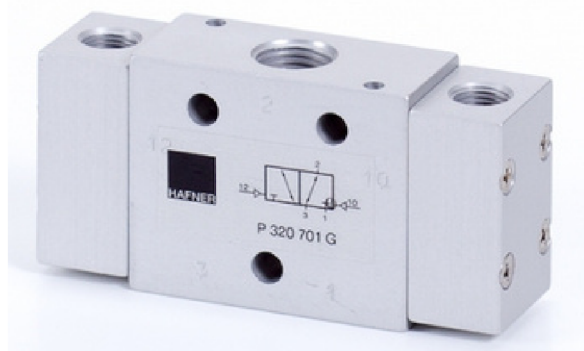
**P 311 181**



Référence	Orifice	Débit	Pression de service	Pression d'actionnement	Poids
P 310 181	G 3/4"	6000 l/min	1 - 10 bars	1 - 10 bars	0,85 kg
P 311 181	G 3/4"	6000 l/min	1 - 10 bars	3 - 10 bars	0,85 kg

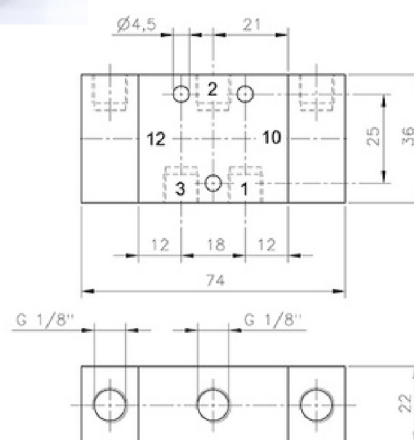
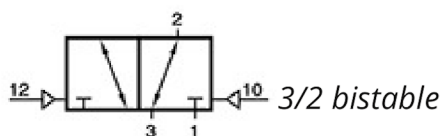
# DISTRIBUTEURS

# P



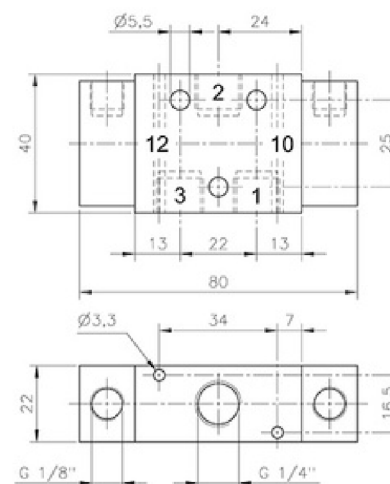
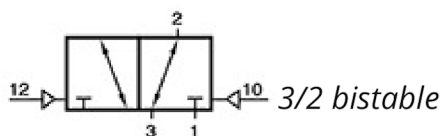
G 1/8"

**P 320 501 G**



G 1/4"

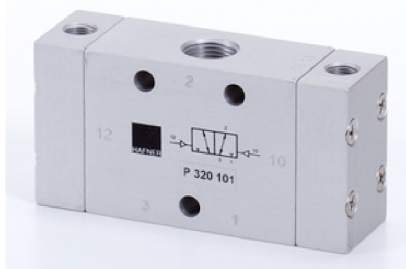
**P 320 701 G**



Référence	Orifice	Débit	Pression de service	Pression d'actionnement	Poids
P 320 501 G	G 1/8"	650 l/min	1 - 10 bars	2,5 - 10 bars	0,16 kg
P 320 701 G	G 1/4"	1250 l/min	1 - 10 bars	2,5 - 10 bars	0,17 kg

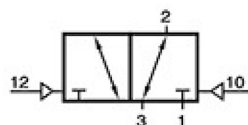
# DISTRIBUTEURS

# P

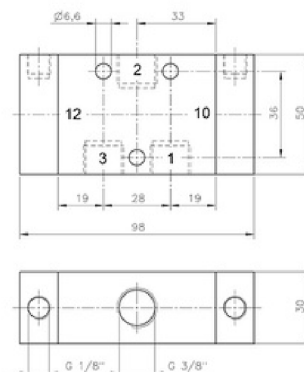


**G 3/8"**

**P 320 101**

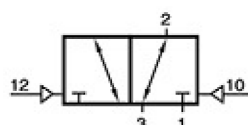


3/2 bistable

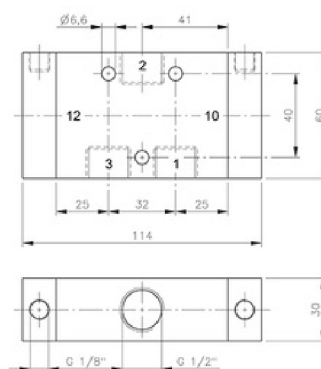


**G 1/2"**

**P 320 121**

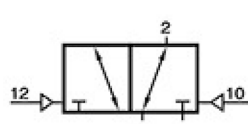


3/2 bistable

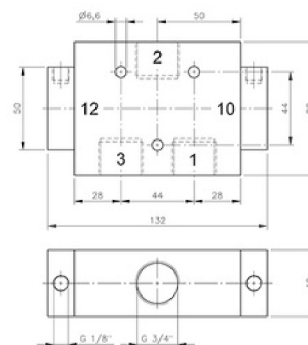


**G 3/4"**

**P 320 181**



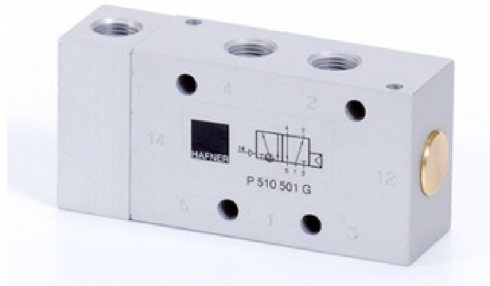
3/2 bistable



Référence	Orifice	Débit	Pression de service	Pression d'actionnement	Poids
P 320 101	G 3/8"	2250 l/min	1 - 10 bars	2,5 - 10 bars	0,38 kg
P 320 121	G 1/2"	3000 l/min	1 - 10 bars	2,5 - 10 bars	0,52 kg
P 320 181	G 3/4"	6000 l/min	1 - 10 bars	2 - 10 bars	0,88 kg

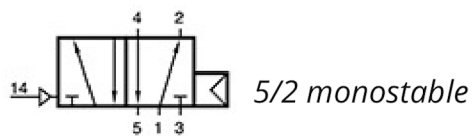
# DISTRIBUTEURS

# P

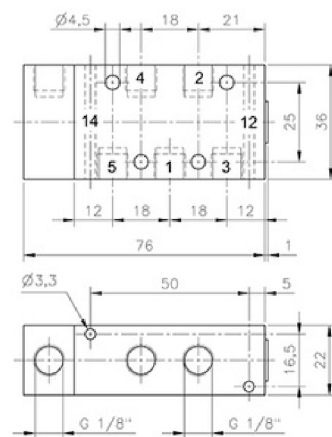
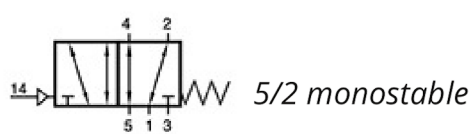


**G 1/8"**

**P 510 501 G**

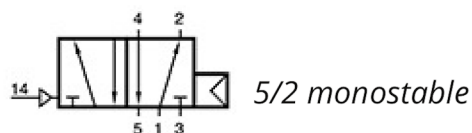


**P 511 501 G**

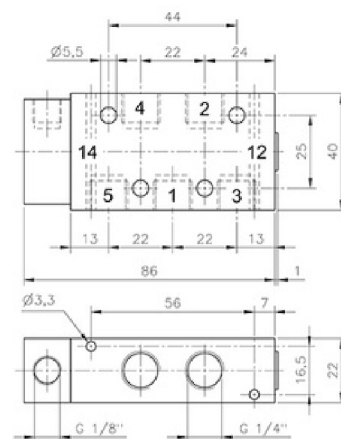


**G 1/4"**

**P 510 701 G**



**P 511 701 G**



Référence	Orifice	Débit	Pression de service	Pression d'actionnement	Poids
P 510 501 G	G 1/8"	650 l/min	2 - 10 bars	2 - 10 bars	0,16 kg
P 510 701 G	G 1/4"	1250 l/min	2 - 10 bars	2 - 10 bars	0,18 kg
P 511 501 G	G 1/8"	650 l/min	1 - 10 bars	3 - 10 bars	0,16 kg
P 511 701 G	G 1/4"	1250 l/min	1 - 10 bars	3 - 10 bars	0,18 kg

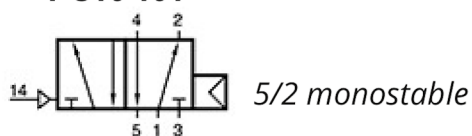
# DISTRIBUTEURS

# P

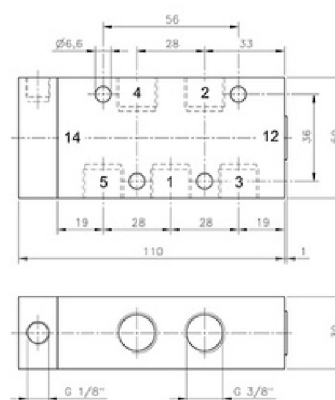
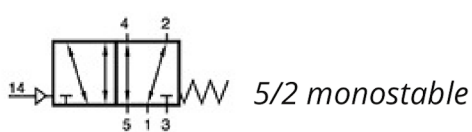


**G 3/8"**

**P 510 101**

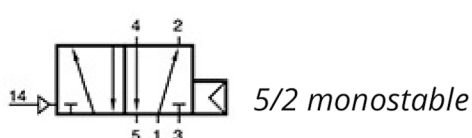


**P 511 101**

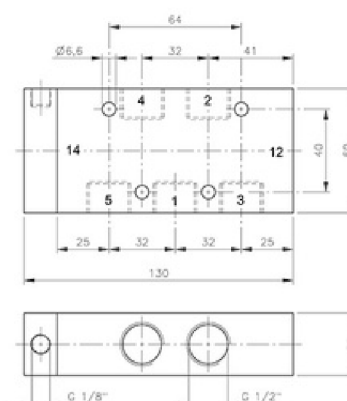
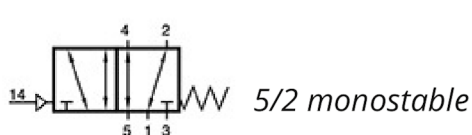


**G 1/2"**

**P 510 121**



**P 511 121**

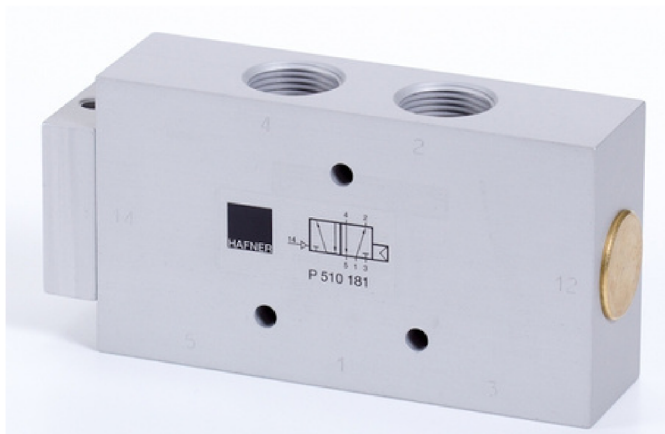


Référence	Orifice	Débit	Pression de service	Pression d'actionnement	Poids
P 510 101	G 3/8"	2250 l/min	1,5 - 10 bars	1,5 - 10 bars	0,42 kg
P 510 121	G 1/2"	3000 l/min	1 - 10 bars	1 - 10 bars	0,59 kg
P 511 101	G 3/8"	2250 l/min	1 - 10 bars	3 - 10 bars	0,42 kg
P 511 121	G 1/2"	3000 l/min	1 - 10 bars	3 - 10 bars	0,59 kg

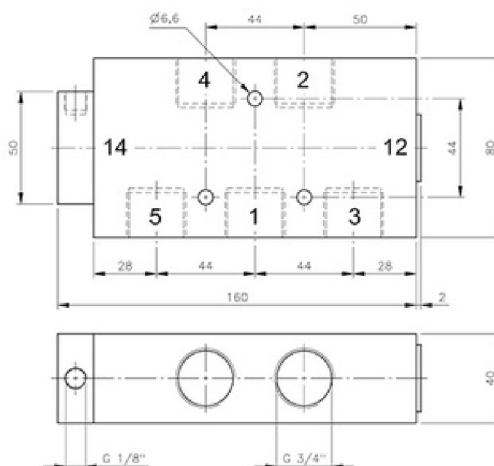
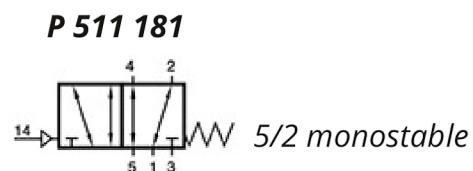
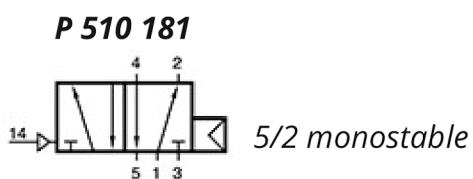


# DISTRIBUTEURS

# P



**G 3/4"**



Référence	Orifice	Débit	Pression de service	Pression d'actionnement	Poids
P 510 181	G 3/4"	6000 l/min	1 - 10 bars	1 - 10 bars	1,18 kg
P 511 181	G 3/4"	6000 l/min	1 - 10 bars	3 - 10 bars	1,18 kg

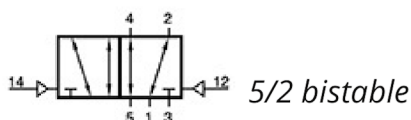
# DISTRIBUTEURS

# P

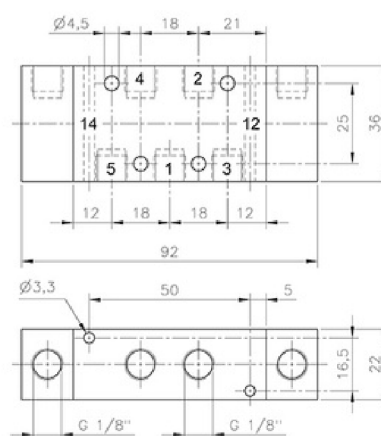
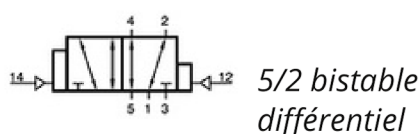


**G 1/8"**

**P 520 501 G**

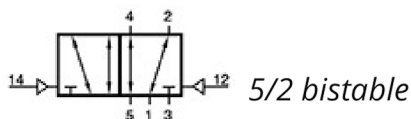


**P 522 501 G**

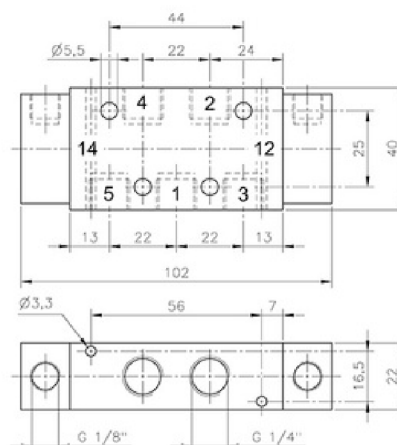
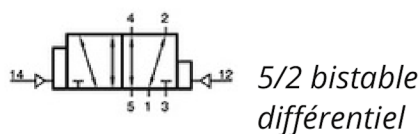


**G 1/4"**

**P 520 701 G**



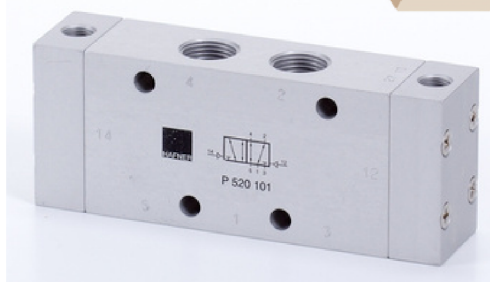
**P 522 701 G**



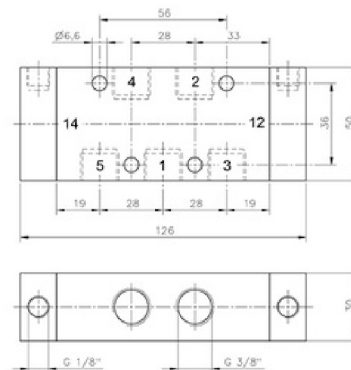
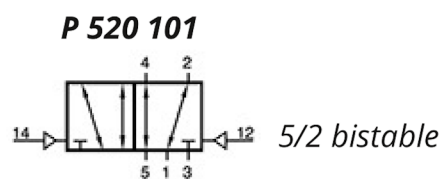
Référence	Orifice	Débit	Pression de service	Pression d'actionnement	Poids
P 520 501 G	G 1/8"	650 l/min	1 - 10 bars	2 - 10 bars	0,20 kg
P 520 701 G	G 1/4"	1250 l/min	1 - 10 bars	2 - 10 bars	0,22 kg
P 522 501 G	G 1/8"	650 l/min	1 - 10 bars	2 - 10 bars	0,20 kg
P 522 701 G	G 1/4"	1250 l/min	1 - 10 bars	2 - 10 bars	0,22 kg

# DISTRIBUTEURS

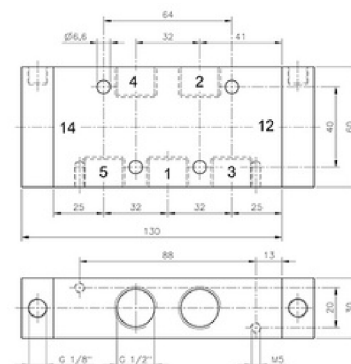
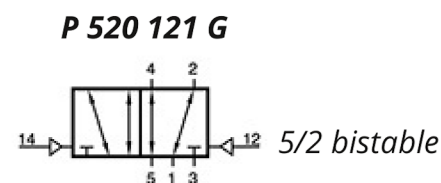
# P



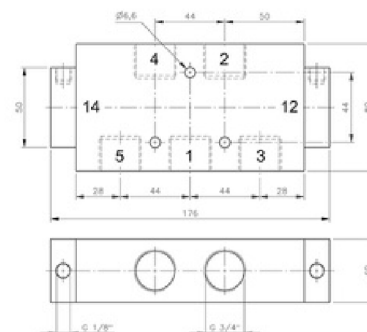
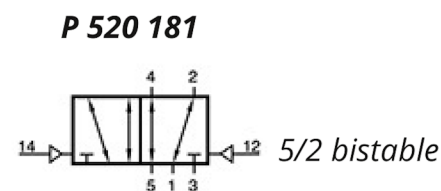
**G 3/8"**



**G 1/2"**



**G 3/4"**



Référence	Orifice	Débit	Pression de service	Pression d'actionnement	Poids
P 520 101	G 3/8"	2250 l/min	1 - 10 bars	1,5 - 10 bars	0,48 kg
P 520 121 G	G 1/2"	3000 l/min	1 - 10 bars	1 - 10 bars	0,67 kg
P 520 181	G 3/4"	6000 l/min	1 - 10 bars	1 - 10 bars	1,22 kg

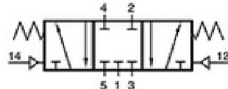
# DISTRIBUTEURS

# P



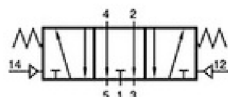
**G 1/8"**

**P 531 501 G**



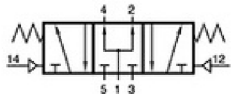
*5/3 centre fermé*

**P 532 501 G**

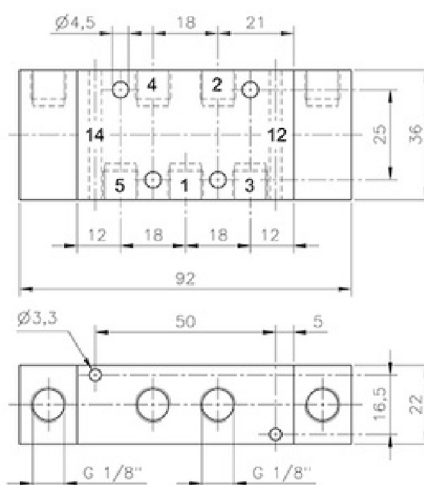


*5/3 centre ouvert*

**P 533 501 G**

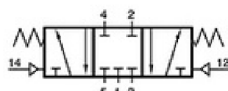


*5/3 centre pression*



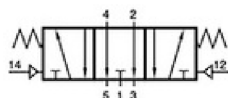
**G 1/4"**

**P 531 701 G**



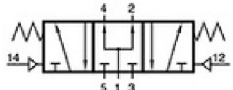
*5/3 centre fermé*

**P 532 701 G**

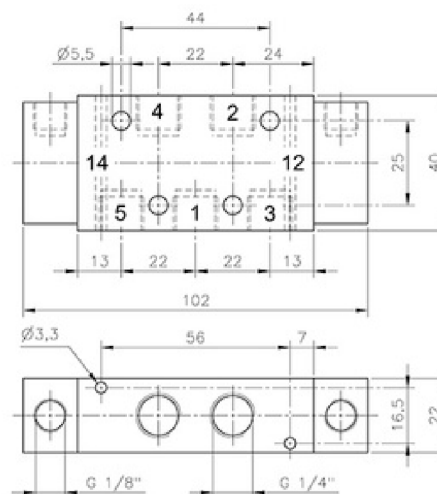


*5/3 centre ouvert*

**P 533 701 G**



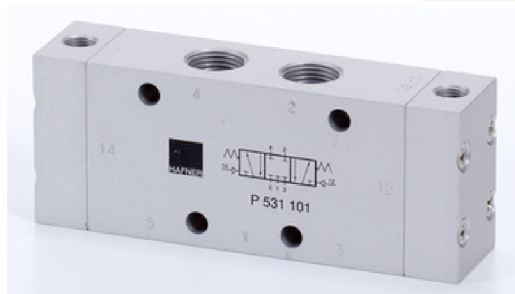
*5/3 centre pression*



Référence	Orifice	Débit	Pression de service	Pression d'actionnement	Poids
P 53_ 501 G	G 1/8"	650 l/min	1 - 10 bars	3 - 10 bars	0,20 kg
P 53_ 701 G	G 1/4"	1250 l/min	1 - 10 bars	3 - 10 bars	0,22 kg

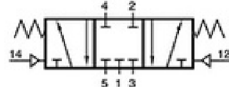
# DISTRIBUTEURS

# P



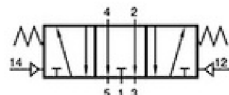
**G 3/8"**

**P 531 101**



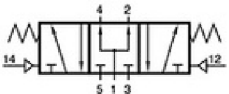
*5/3 centre fermé*

**P 532 101**

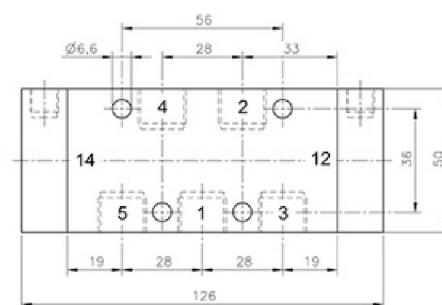


*5/3 centre ouvert*

**P 533 101**

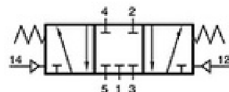


*5/3 centre pression*



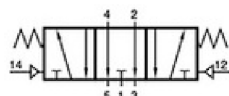
**G 1/2"**

**P 531 121 G**



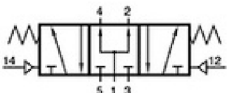
*5/3 centre fermé*

**P 532 121 G**

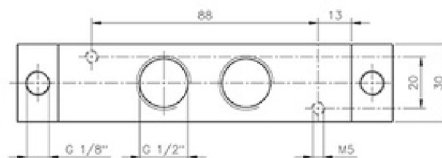
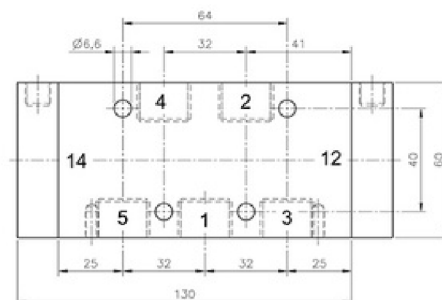


*5/3 centre ouvert*

**P 533 121 G**



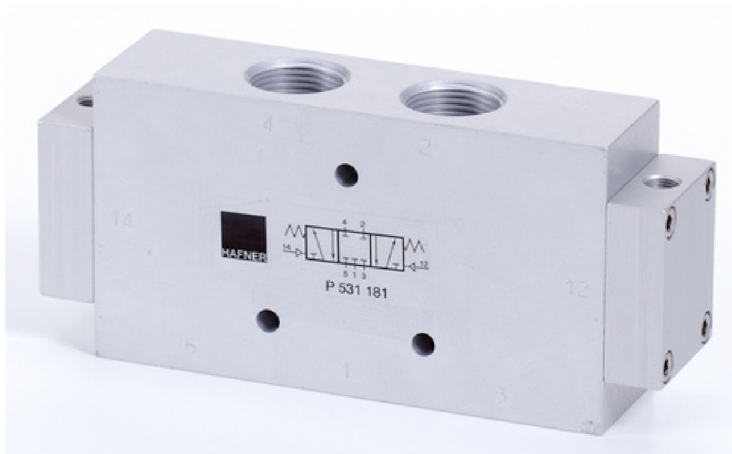
*5/3 centre pression*



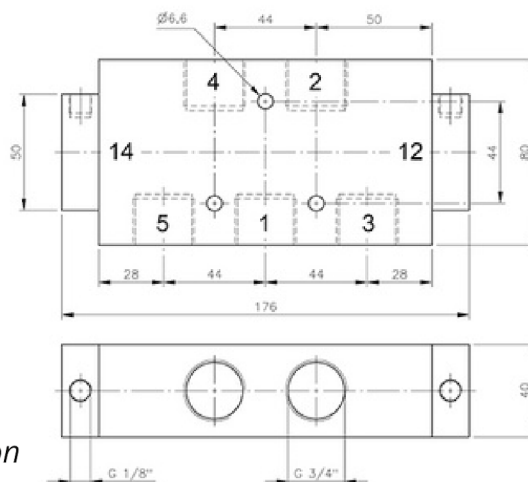
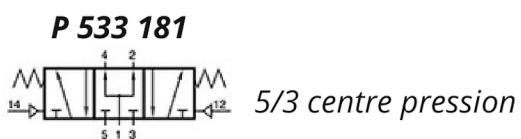
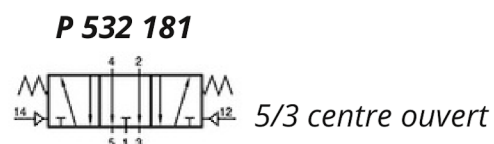
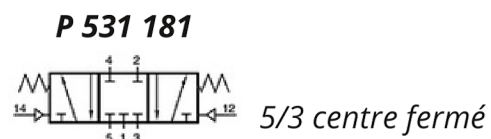
Référence	Orifice	Débit	Pression de service	Pression d'actionnement	Poids
P 53_101 G	G 3/8"	2250 l/min	1 - 10 bars	3 - 10 bars	0,49 kg
P 53_121 G	G 1/2"	3000 l/min	1 - 10 bars	3 - 10 bars	0,69 kg

# DISTRIBUTEURS

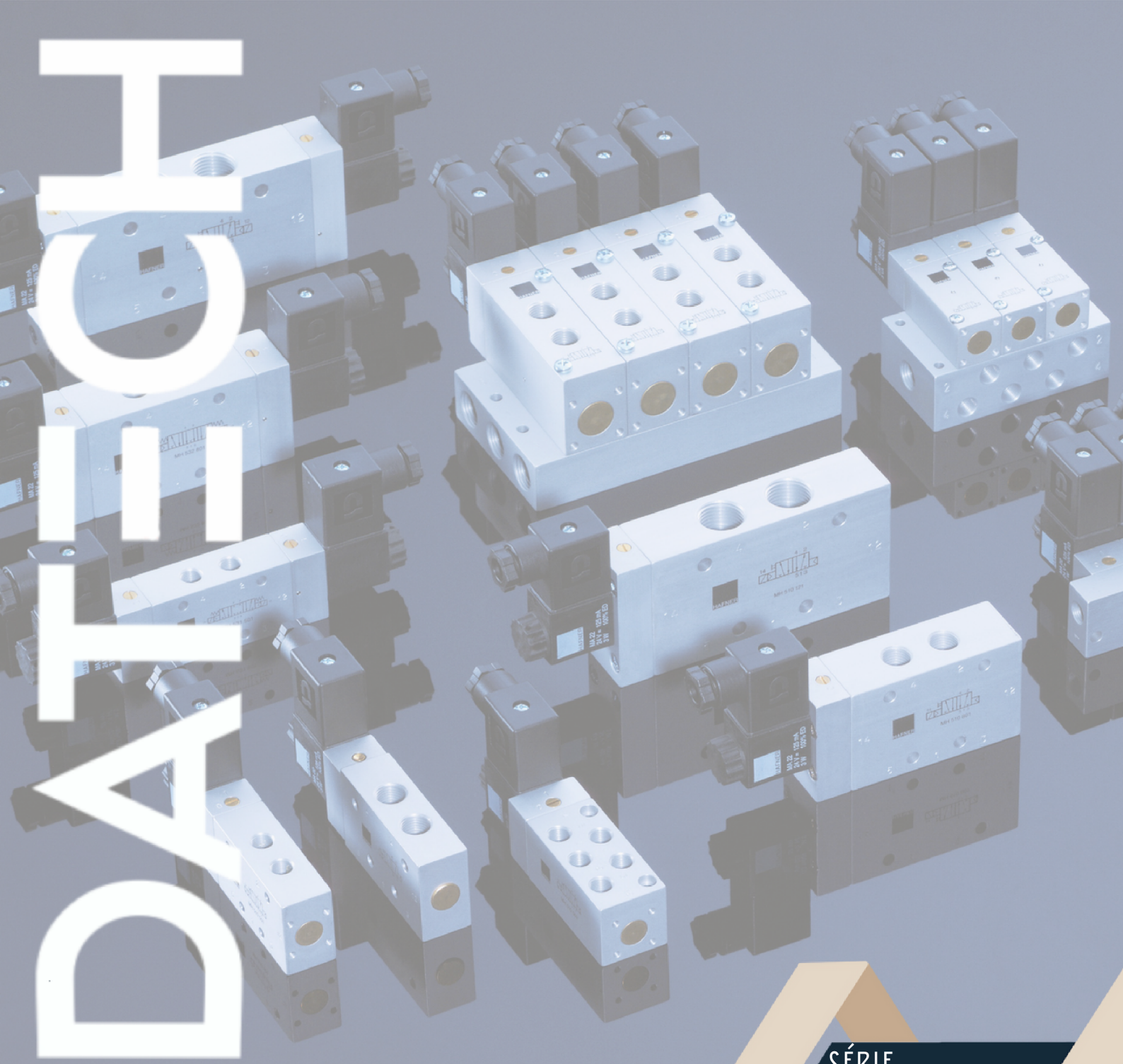
# P



**G 3/4"**



Référence	Orifice	Débit	Pression de service	Pression d'actionnement	Poids
P 53_181 G	G 3/4"	6000 l/min	1 - 10 bars	3 - 10 bars	1,22 kg



# ISO 1/4 TA D

EMBASES

SÉRIE

G

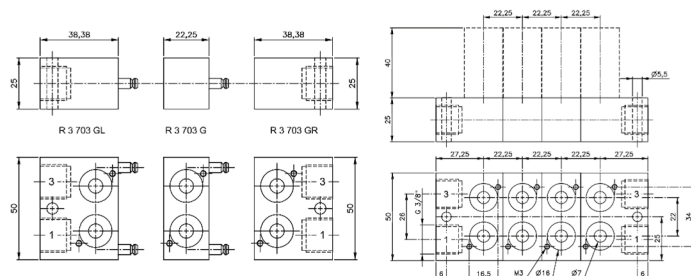
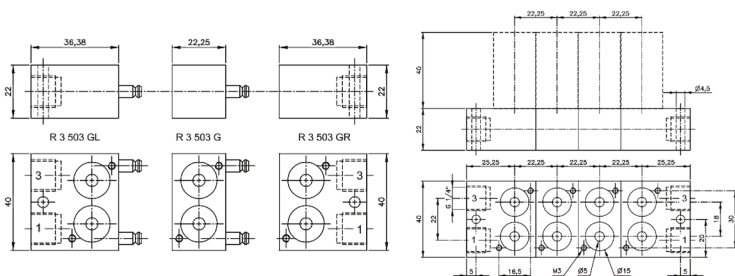
# EMBASES 3/2

# G



**G 1/8"**

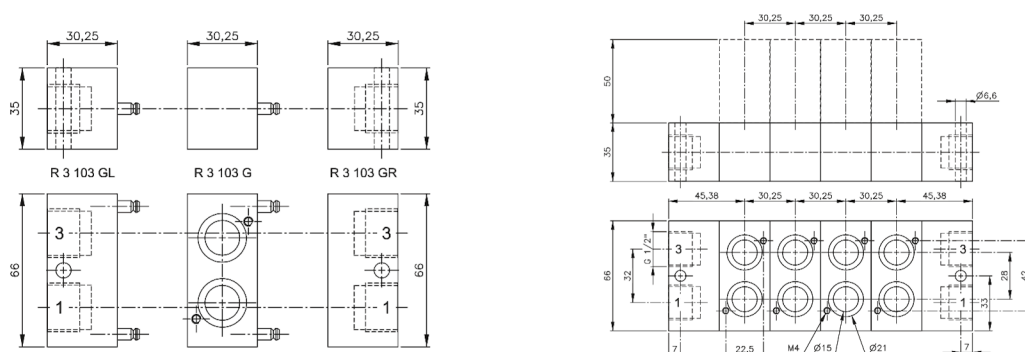
**G 1/4"**



Référence	Fonction	Poids
R 3 503 GR	Plaque de droite	0,07 kg
R 3 503 GL	Plaque de gauche	0,07 kg
R 3 503 G	Plaque centrale	0,05 kg

Référence	Fonction	Poids
R 3 703 GR	Plaque de droite	0,11 kg
R 3 703 GL	Plaque de gauche	0,11 kg
R 3 703 G	Plaque centrale	0,07 kg

**G 3/8"**



Référence	Fonction	Poids
R 3 103 GR	Plaque de droite	0,14 kg
R 3 103 GL	Plaque de gauche	0,15 kg
R 3 103 G	Plaque centrale	0,12 kg

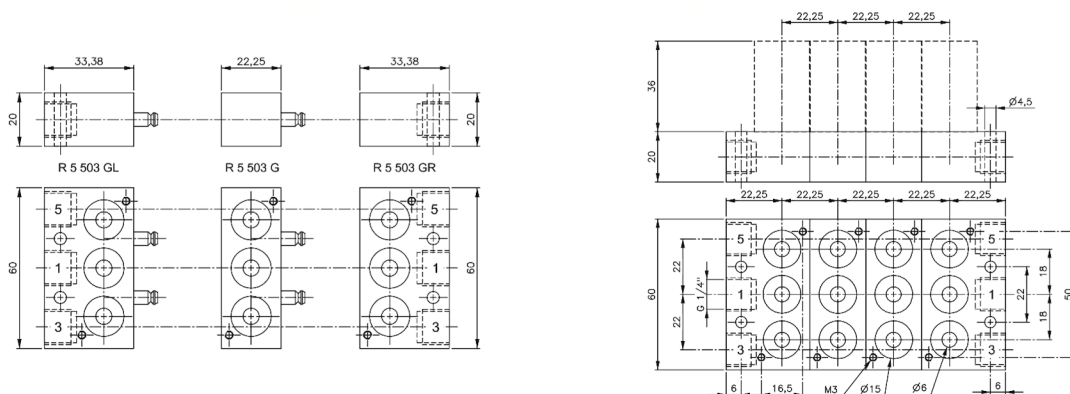


# EMBASES 5/2 ET 5/3

# G

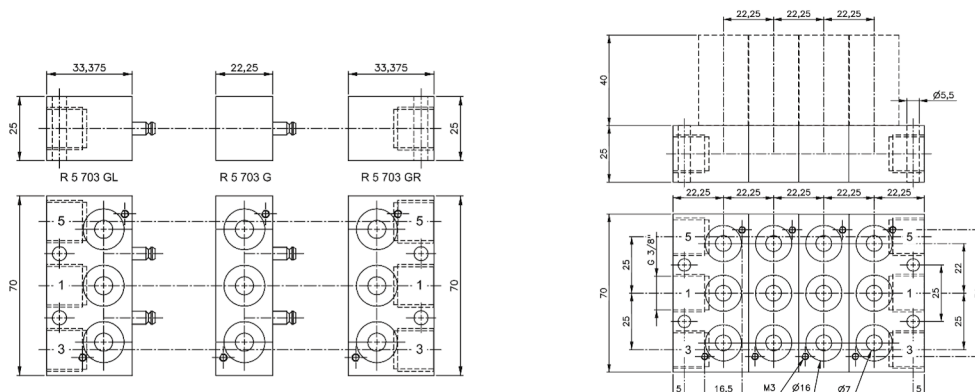


**G 1/8"**



Référence	Fonction	Poids
R 5 503 GR	Plaque de droite	0,08 kg
R 5 503 GL	Plaque de gauche	0,08 kg
R 5 503 G	Plaque centrale	0,06 kg

**G 1/4"**



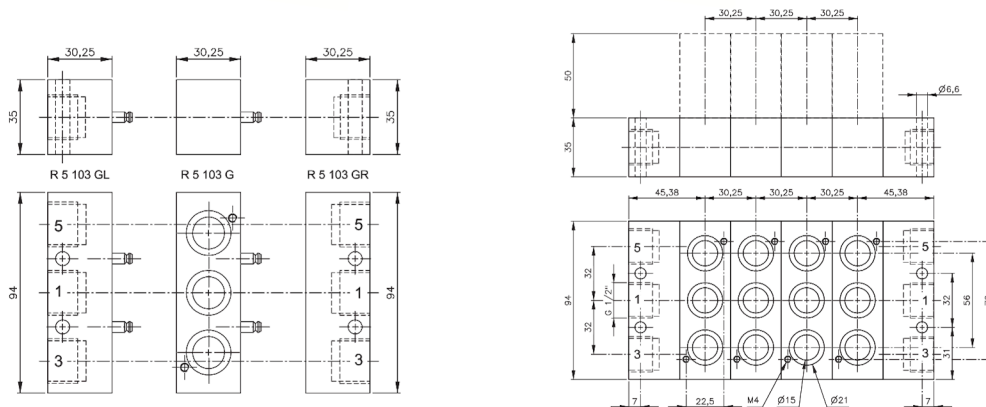
Référence	Fonction	Poids
R 5 703 GR	Plaque de droite	0,13 kg
R 5 703 GL	Plaque de gauche	0,12 kg
R 5 703 G	Plaque centrale	0,09 kg

# EMBASES 5/2 ET 5/3

# G

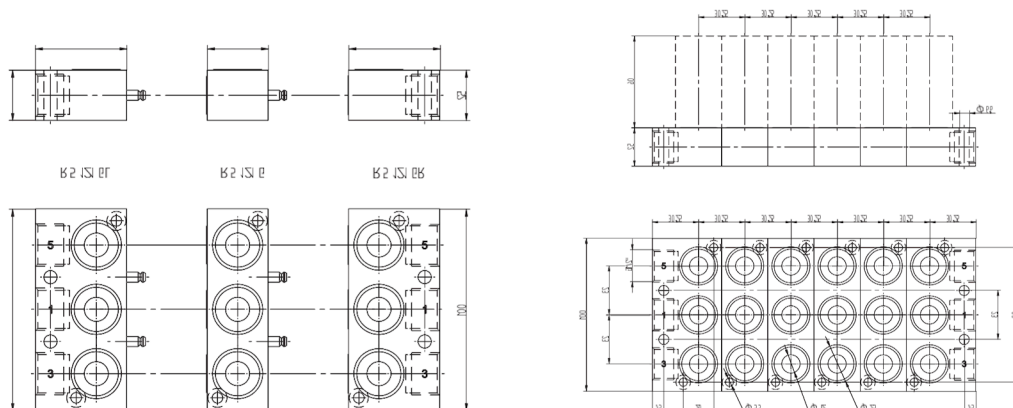


**G 3/8"**



Référence	Fonction	Poids
R 5 103 GR	Plaque de droite	0,20 kg
R 5 103 GL	Plaque de gauche	0,21 kg
R 5 103 G	Plaque centrale	0,18 kg

**G 1/2"**



Référence	Fonction	Poids
R 5 121 GR	Plaque de droite	0,24 kg
R 5 121 GL	Plaque de gauche	0,24 kg
R 5 121 G	Plaque centrale	0,15 kg