

DATECH



SÉCURITÉ BIMANUELLE

SÉRIE
KI

SÉCURITÉ BIMANUELLE

KI



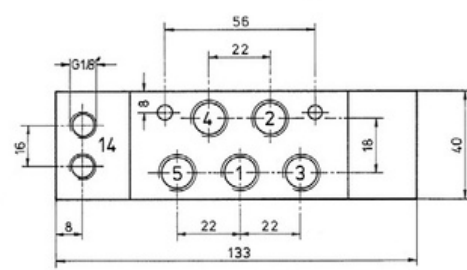
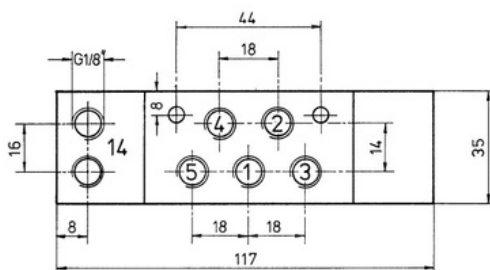
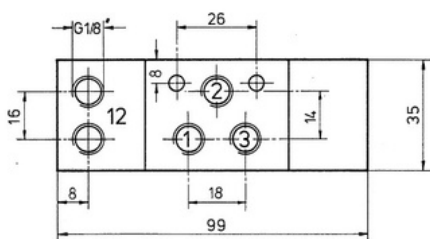
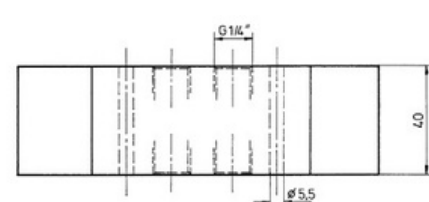
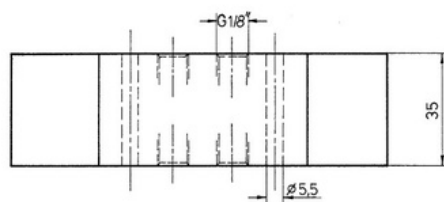
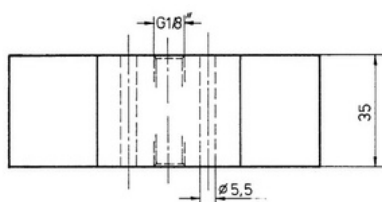
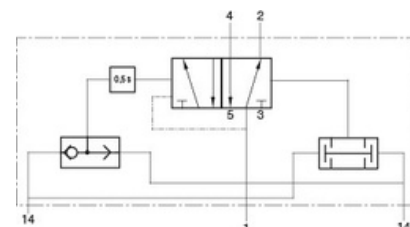
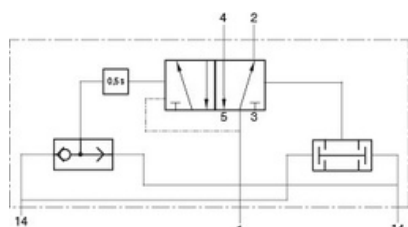
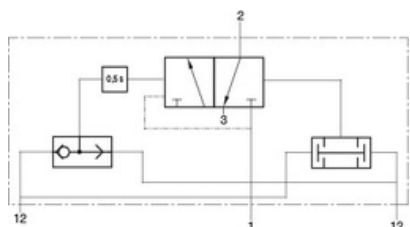
KI 310 502



KI 510 502



KI 510 802



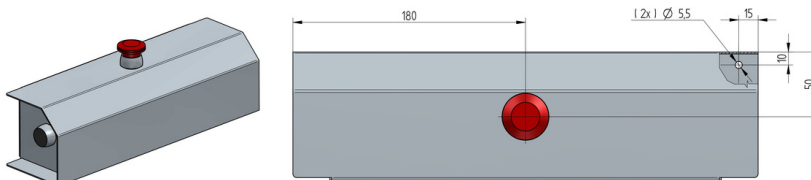
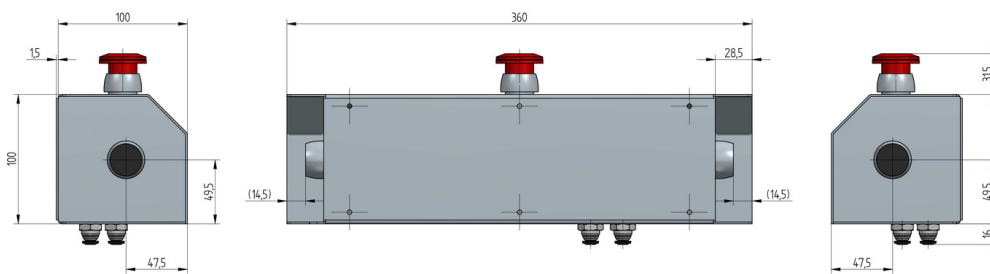
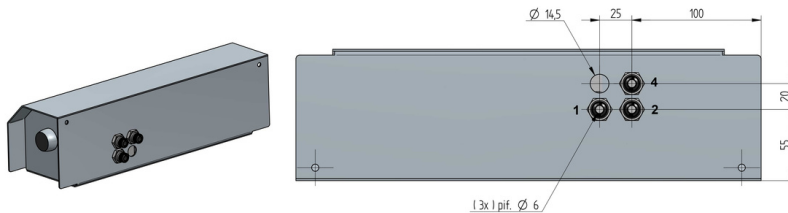
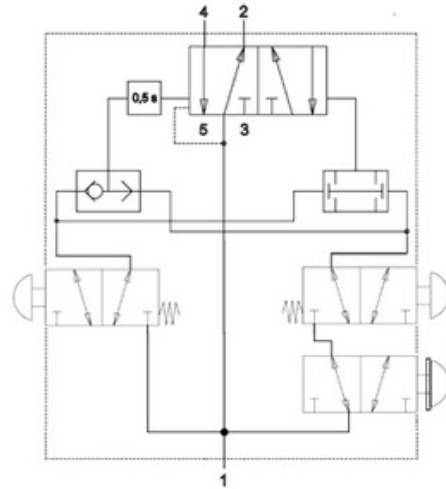
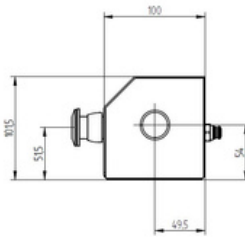
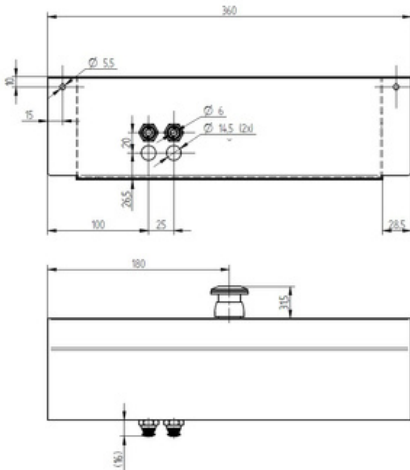
Référence	Orifice	Orifice de pilotage	Débit	Pression
KI 310 502	G 1/8"	G 1/8"	650 l/min	2 - 10 bars
KI 510 502	G 1/8"	G 1/8"	650 l/min	2 - 10 bars
KI 510 802	G 1/4"	G 1/8"	1450 l/min	2 - 10 bars

SÉCURITÉ BIMANUELLE

KI



KKI 04 000



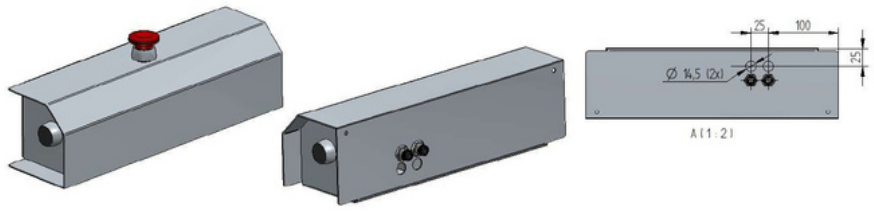
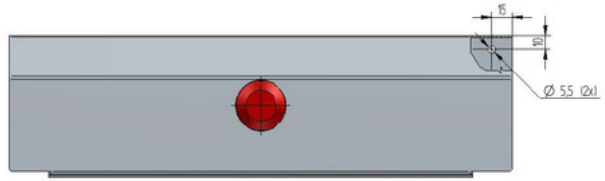
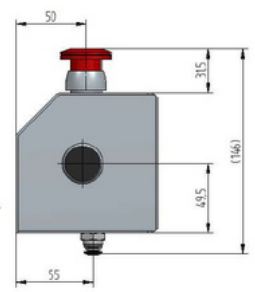
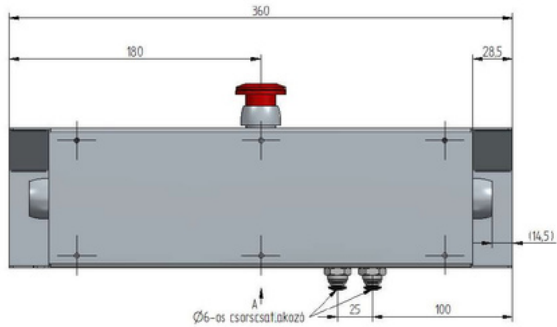
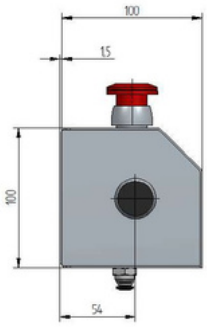
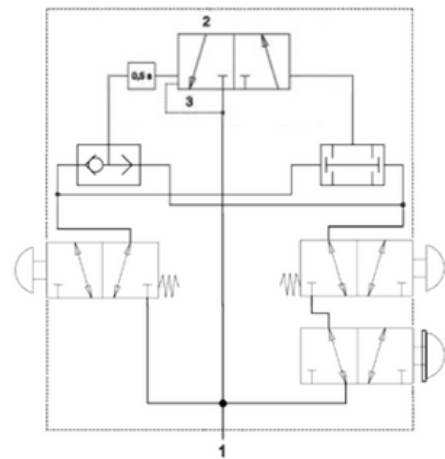
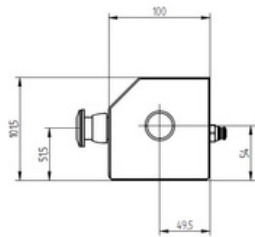
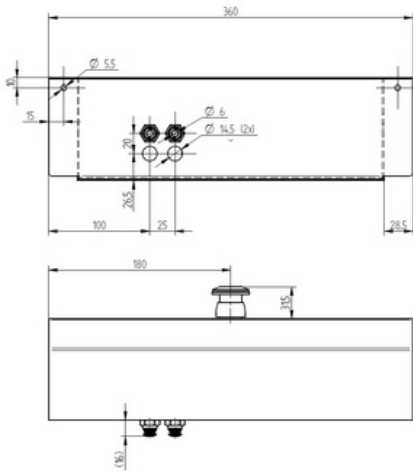
Référence	température de fonctionnement	Pression de service	Force d'actionnement	Débit
KKI 04 000	-10°C - +50°C	2 - 10 bar	14N	650 NL/min

SÉCURITÉ BIMANUELLE

KI



KKI 02 000



Référence	température de fonctionnement	Pression de service	Force d'actionnement	Débit
KKI 02 000	-10°C - +50°C	2 - 10 bar	14N	650 NL/min