

Série

GH

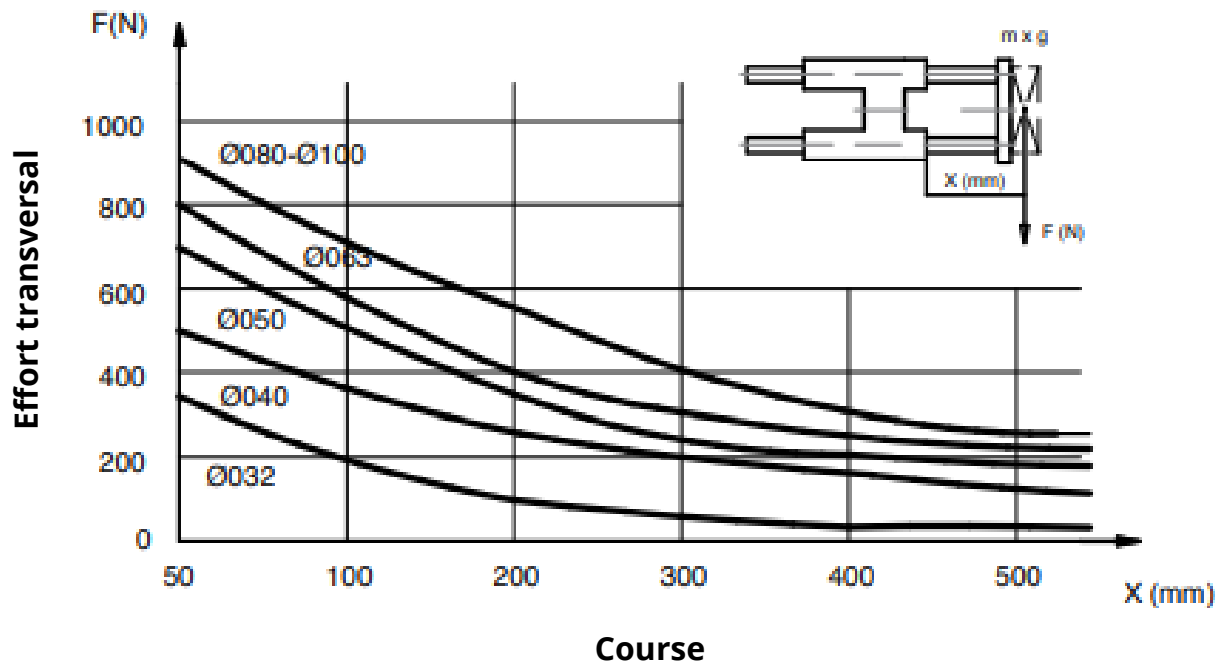
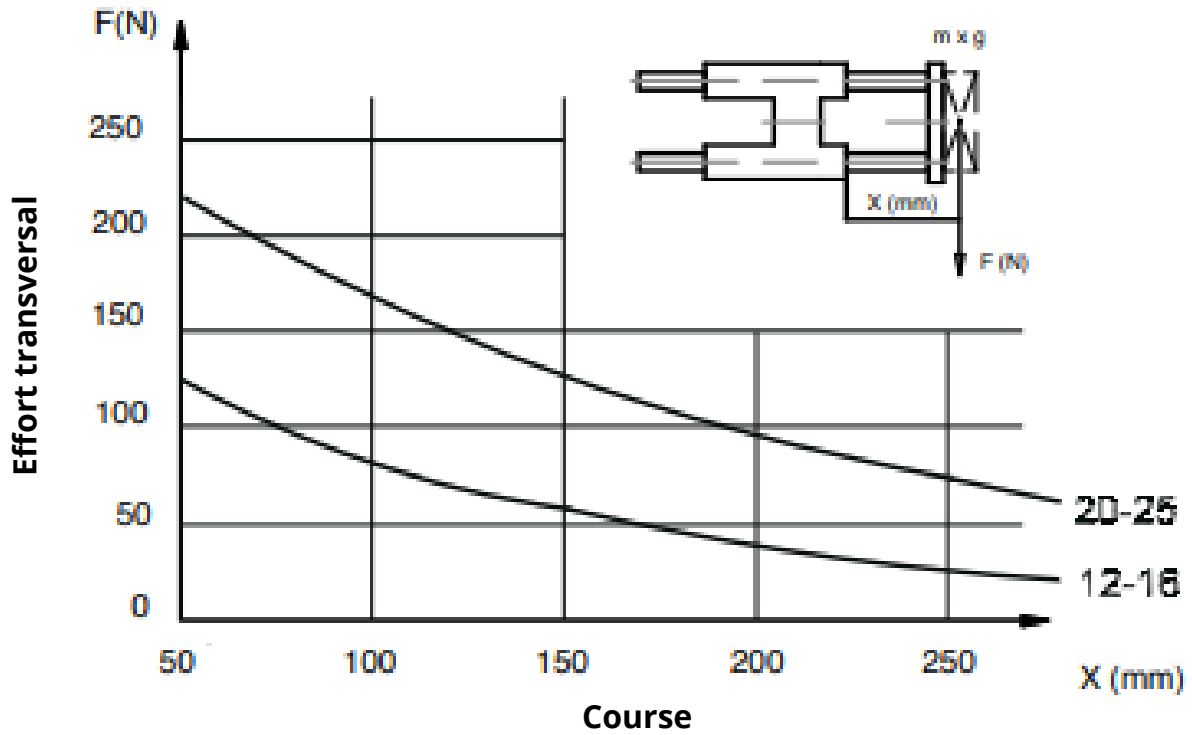
# FICHE TECHNIQUE

Fabrication française



## Unité de guidage en H

**DATECH**  
MANUFACTURE PNEUMATIQUE



Famille de produit	<b>Unité de guidage en H</b>		
Série	<b>GH</b>	Version	<b>H</b>

## Alésage

Ø 16 → Ø 100

## Course

Maxi 3000mm

## Version

: Bagues bronze autolubrifiantes

**B** : Douilles à billes

## Option

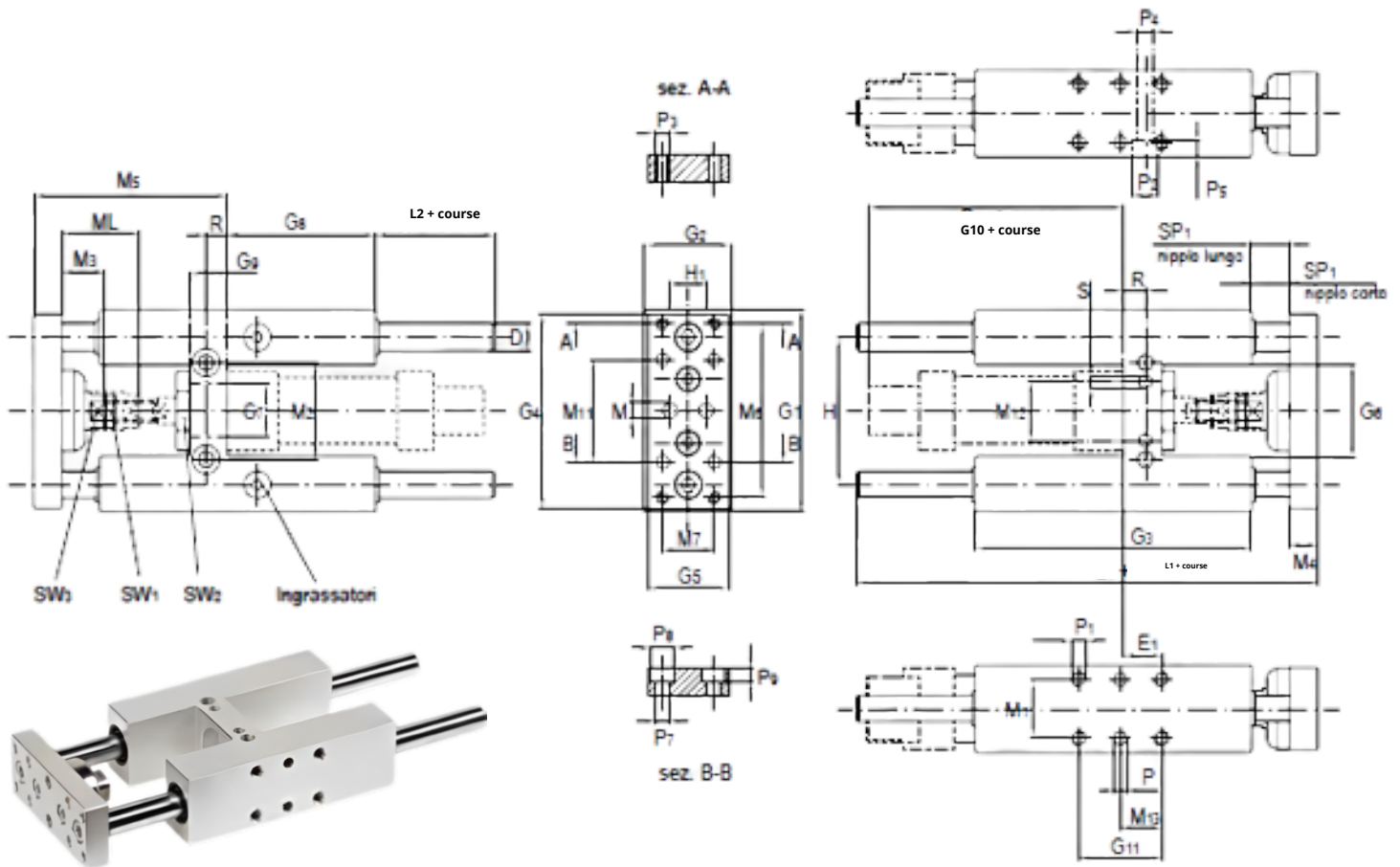
**CX** : Colonne

INOX

## Série

**GH** : Unité de guidage en H

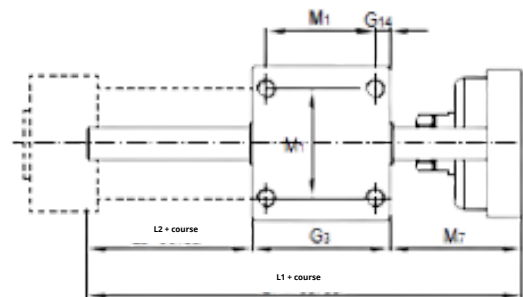
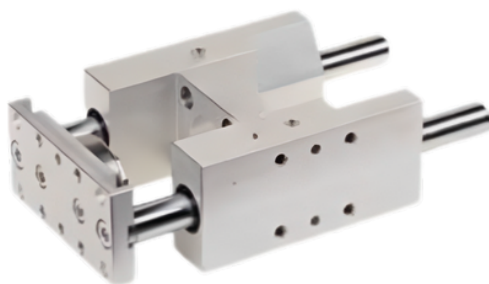
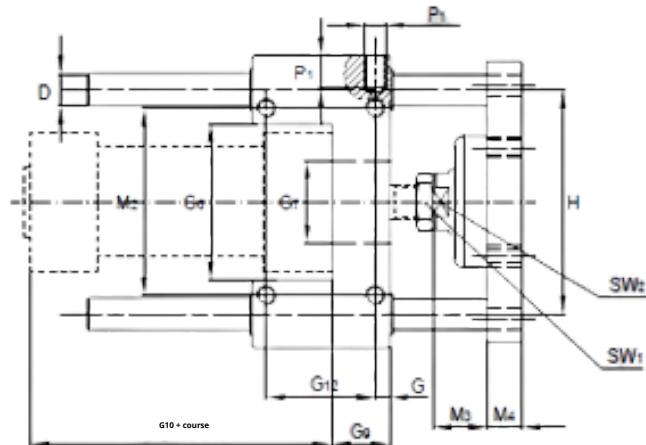
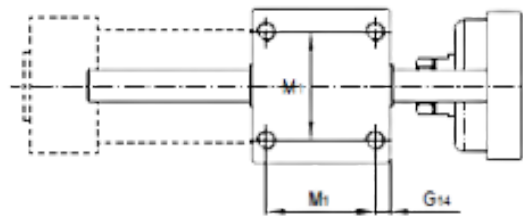
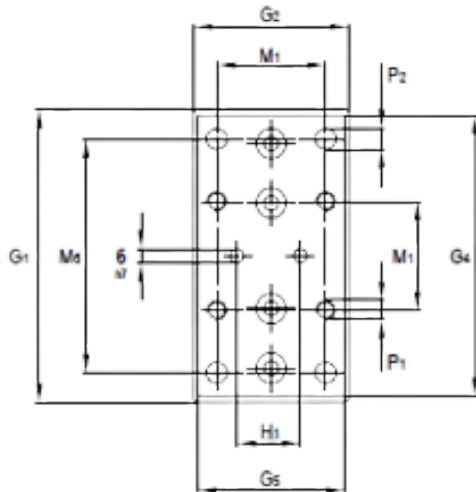
Famille de produit	<b>Unité de guidage en H</b>	Diamètre	<b>12-25 mm</b>
Série	<b>GH</b>	Version	<b>H</b>



Dimensions																							
Ø(mm)	D	E1	G1	G2	G3	G4	G5	G6	G7	G8	G9	G10	G11	H	H1	L1	L2	M1	M2	M3	M4	M5	M6
12	10	11	65	30	75	63	27	27	16	37	13	66	32.5	46	15	125	37	22	24	12	10	51	54
16	10	11	65	30	75	63	27	27	16	37	13	71	32.5	46	15	125	37	22	24	12	10	51	54
20	12	15	79	34	108	76	32	36	22	58	15	87	32.5	58	20	160	37	23	38	18	12	65	68
25	12	15	79	34	108	76	32	36	22	58	15	90	32.5	58	20	160	37	23	38	18	12	65	68

Dimensions																						
Ø(mm)	M7	M h7	M11	M12	M13	ML	P1	P2	P3	P4	P5	P7	P8	P9	P h7	S h7	R	SP	SP1	SW1	SW2	SW3
12	15	4	32	-	16.25	/	M4	8.5	M4	5.5	5.5	4.5	7	4.5	-	-	6.5	3	3	10	19	8
16	15	4	32	-	16.25	/	M4	8.5	M4	5.5	5.5	4.5	7	4.5	-	-	6.5	3	3	10	19	8
20	20	6	40	23	16.25	40	M6	10.5	M5	6.5	7	5.5	9	6	5	5	8.5	3	22	13	27	13
25	20	6	40	23	16.25	40	M6	10.5	M5	6.5	7	5.5	9	6	5	5	8.5	3	22	17	27	13

Famille de produit	<b>Unité de guidage en H</b>	Diamètre	<b>32-100 mm</b>
Série	<b>GH</b>	Version	<b>H</b>



Dimensions																												
Ø(mm)	D	G	G1	G2	G3	G4	G5	G6	ØG7	G9	G10	G12	G14	H	H1	M1	M2	M3	M4	M6	M7	L1	L2	ØP1	P2	P3	SW1	SW2
32	12	7.8	100	48	48	95	45	48	30	17	94	32.5	7.8	74	31	32.5	58	23	11	78	46	108	14	M6	6.5	12	15	17
40	12	10	106	56	58	101	53	64	35	21	105	38	10	80	36	38	64	23	15	84	52	120	10	M6	6.5	12	15	17
50	16	6.3	125	66	59	120	63	67	40	25	106	46.5	6.3	96	45	46.5	80	24	15	100	65	130	6	M8	8.5	15	22	24
63	16	9.8	132	76	76	127	73	76	45	25	121	56.5	9.8	104	45	56.5	95	24	15	105	65	145	4	M8	8.5	15	22	24
80	20	20	165	98	90	160	95	97	45	34	128	50	9	130	56	72	130	30	16	130	71	170	9	M10	11	18	27	27
100	20	20	185	118	110	180	115	117	55	39	138	70	10.5	150	56	89	150	30	18	150	71	190	9	M10	11	18	27	27